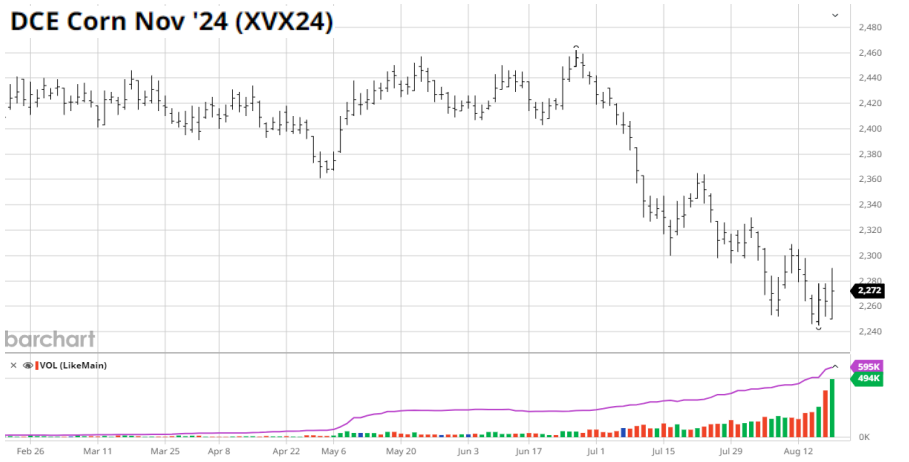
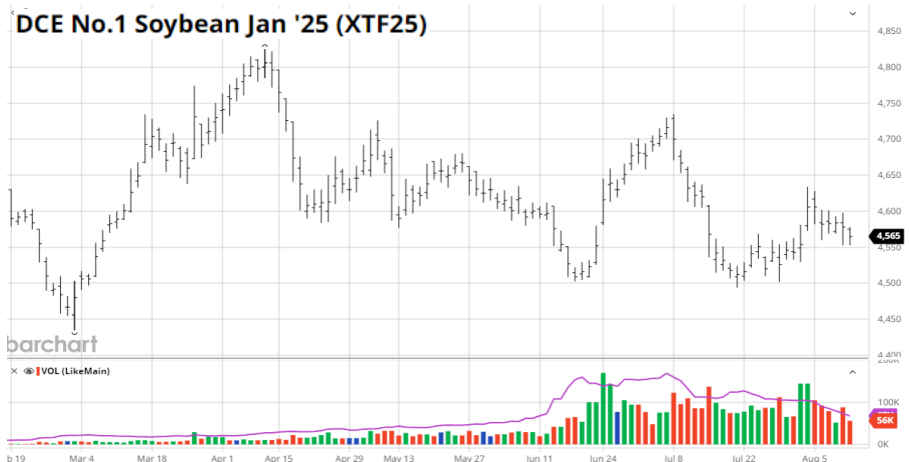


DCE Corn Nov '24 (XVX24)



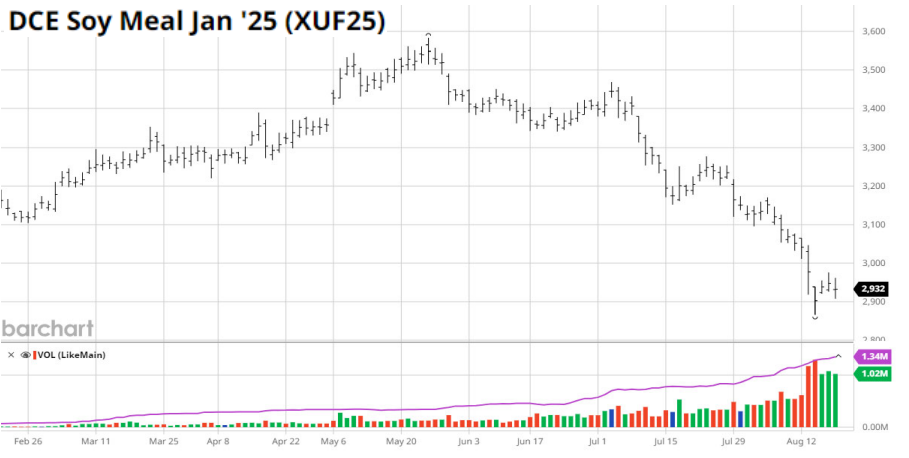
Weekly Net Changes for Dalian Corn Futures										
Cont. Yr/Mnth	Open	High	Low	Close	Settle	Chg	Volume	OI	OI Chg	
c2409	2,298	2,312	2,294	2,310	2,304	8	116,211	184,754	-46,444	\$8.05
c2411	2,250	2,290	2,250	2,287	2,272	23	494,190	595,312	19,636	1.01%
c2501	2,239	2,270	2,235	2,268	2,255	22	157,883	435,580	-4,068	
c2503	2,227	2,252	2,226	2,251	2,240	11	32,694	111,427	5,677	
c2505	2,269	2,291	2,268	2,289	2,280	8	12,341	32,031	2,871	
Corn Totals	-	-	-	-	-	-	825,303	1,373,105	-21,148	

DCE No.1 Soybean Jan '25 (XTF25)



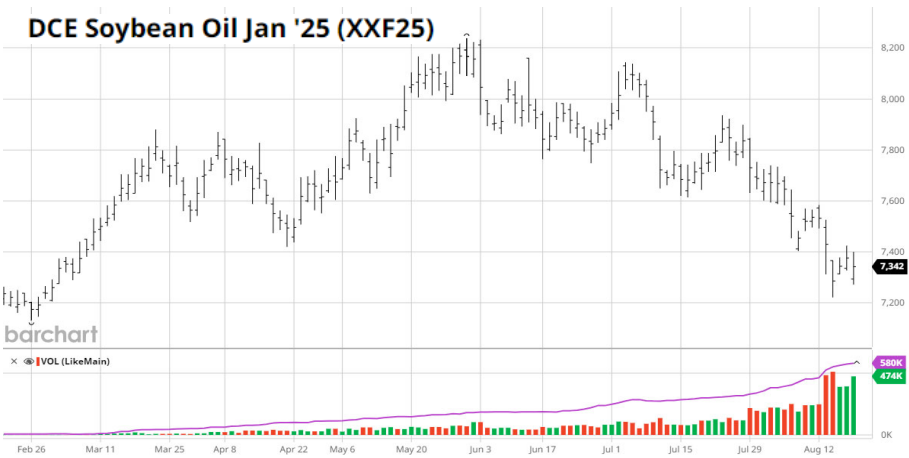
Weekly Net Changes for Dalian Soybean Futures										
Cont. Yr/Mnth	Open	High	Low	Close	Settle	Chg	Volume	OI	OI Chg	
a2409	4,442	4,499	4,442	4,493	4,481	20	24,440	29,290	-9,649	
a2411	4,346	4,365	4,335	4,360	4,355	2	3,967	22,986	789	\$16.17
a2501	4,256	4,268	4,248	4,252	4,256	-10	51,698	138,982	10,098	-0.23%
a2503	4,216	4,228	4,200	4,206	4,212	-20	2,865	9,191	831	
a2505	4,255	4,266	4,246	4,250	4,255	-18	1,231	5,372	618	
Soybeans Total	-	-	-	-	-	-	84,317	206,607	2,767	

DCE Soy Meal Jan '25 (XUF25)



Weekly Net Changes for Dalian Soymeal Futures										
Cont. Yr/Mnth	Open	High	Low	Close	Settle	Chg	Volume	OI	OI Chg	
m2409	2,900	2,938	2,894	2,902	2,913	-10	198,909	388,499	-44,544	
m2411	2,938	2,971	2,924	2,933	2,945	-19	95,837	477,739	8,481	\$371.24
m2501	2,931	2,961	2,908	2,917	2,932	-30	1,016,556	1,343,709	34,415	-1.02%
m2503	2,845	2,869	2,829	2,842	2,846	-21	11,154	99,859	-107	
m2505	2,761	2,785	2,752	2,762	2,766	-16	180,044	910,701	5,066	
Soymeal Total	-	-	-	-	-	-	1,529,060	3,412,957	6,846	

DCE Soybean Oil Jan '25 (XXF25)



Weekly Net Changes for Dalian Soybean Oil Futures										
Cont. Yr/Mnth	Open	High	Low	Close	Settle	Chg	Volume	OI	OI Chg	
y2409	7,330	7,432	7,322	7,402	7,388	0	100,965	133,014	-25,608	
y2411	7,300	7,380	7,272	7,348	7,336	-14	10,477	30,783	957	\$0.46
y2501	7,294	7,400	7,272	7,368	7,342	-8	473,577	579,550	7,169	-0.11%
y2503	7,238	7,336	7,214	7,310	7,290	-4	305	3,762	52	
y2505	7,126	7,210	7,102	7,190	7,164	2	27,687	146,678	3,447	
Soyoil Total	-	-	-	-	-	-	613,406	897,094	-14,004	

1 US \$ = 7.1649

Charts reflect 3:00PM (1:00AM CST) Beijing Settlement; Close in Data Table reflects extended hours 11:30PM (9:30 AM CST)

Dalian Corn does not have extended trading hours; Weekly % (+/-) reflective of settlement price

Green Box = CBOT \$ Equivalent for DCE Lead Contract